

UNICIMA CORPORATION

Kitamura Bldg. 2-6-16 Yaesu Chuo-ku, Tokyo 104-0028, Japan.

Tel: 81-3-3516-1020 Fax: 81-3-3272-1281 t.nakamikawa@unicima.com

<http://www.unicima.com>

FLANGE, FITTING & PIPE Supply Record & Photo

CLIENT	PRODUCT	MATERIAL	STANDARD	PRESSURE RATING	SIZE	QUANTITY/ YEAR	UNIT
OIL	SS TUBE SMLS	A269 / A213 TP316L	ASTM	1,000PSI	1/8" TO 1"	30,000	PCS
GAS	SS PIPE SMLS	A312 TP316L	ASTM	SCH.10S, 40S, 80S	1/4" TO 8"	10,000	PCS
CHEMICAL	SS PIPE WELDED	A312 TP304	ASTM	SCH.10S, 40S, 80S	1/4" TO 24"	50,000	PCS
STEAM	SS PIPE WELDED	A554 TP304, 202, 201	ASTM		1/2" TO 4"	70,000	PCS
WATER	SS SANITARY TUBE	A270 TP304/DIN11850	ASTM	(SANITARY)	1" TO 4"	4,000	PCS
SANITARY	CS PIPE SMLS	A106, A53, API5L X70	ASTM	SCH.40, SCH.80	1/2" TO 24"	10,000	PCS
ORNAMENT	CS TUBE SMLS, BOILER	A179, A192	ASTM		1" TO 4"	2,000	PCS
MINING	CS PIPE WELDED	API 5L X70, A53 GR.B	ASTM	SCH.10, 40	1/2" TO 68"	5,000	PCS
	3LPE COATING PIPE	API 5L GR.B X65	ASTM	SCH.STD	6" TO 30"	3,000	PCS
	SS FLANGE	A182 F316L	ASTM	150# TO 300#	1/2" TO 24"	500	MT
	SS FLANGE	A182 F316L	BS	150#	28" TO 40"	50	MT
	SS FLANGE	A182 F316L	BACKUP	150# TO 300#		100	MT
	CS FLANGE	A105	ASTM	150# TO 1500#	1/2" TO 36"	3,000	MT
	CS FLANGE	A105	AWWA C207	CLASS D,E	8" TO 70"	100	MT
	ALLOY FLANGE	A694 F60, 65, 70	ASTM	150# TO 900#	4" TO 42"	300	MT
	SS FITTING BUTT WELD	A403 WP316L	ASTM	SCH.10S, 40S, 80S	1/2" TO 24"	3,000	MT
	SS FITTING HIGH PRESSURE	A182 F316L	ASTM	3000#, 6000#	1/8" TO 4"	50	MT
	SS FITTING SCREWED	A351 CF8M	ASTM	150#	1/8" TO 4"	150	MT
	SS FITTING, SANITARY	AISI 304	3A, SMS, DIN	(SANITARY)	1" TO 4"	100	MT
	SS TUBE FITTING	AISI 316			1/4" TO 1/2"	20	MT
	CS FITTING BUTT WELD	A234 WPB	ASTM	SCH.40 TO SCH.160	1/2" TO 46"	600	MT
	ALLOY FITTING BUTT WELD	A860 WPHY60, 65, 70	ASTM	SCH.40 TO SCH.160	12" TO 46"	50	MT
	CS FITTING HIGH PRESSURE	A105, A105	ASTM	3000#, 6000#	1/8" TO 4"	150	MT
	FITTING MALLEBLE	A197	ASTM	150#, 300#	1/8" TO 6"	150	MT
	FITTING GROOVED	DUCTILE IRON	UL, FM		1" TO 20"	150	MT
	PIPE NIPPE	AISI 304		SCH.40 TO SCH.160	1/8" TO 4"	10	MT
	SS SHEET & COIL	AISI 304, 202, 201	ASTM		0.4MM TO 16MM	500	MT
	SS BAR (ROUND,FLAT, ANGLE)	AISI 304	ASTM		1/8" TO 2"	120	MT
	WEATHER-RESISTANT PLATE	COR-TEN					
	THERMOMETER						
	PRESSURE GAUGE						
	SPRINKLER		UL, FM			30,000	PCS

UNICIMA CORPORATION

Kitamura Bldg. 2-6-16 Yaesu Chuo-ku, Tokyo 104-0028, Japan.

Tel: 81-3-3516-1020 Fax: 81-3-3272-1281 tnakamikawa@unicima.com



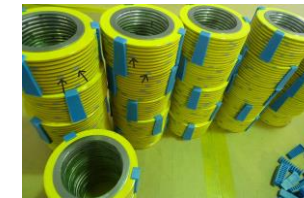
ASTM A694 F70 FLANGE 28" 600LBS WN RF SCH.14.28MM ASME B16.47 SERIE A



HEAT TREATMENT AND QUENCHING



68" CARBON PIPE



SPIRAL WOUND GASKET



BACK-UP FLANGE ASTM A182 F316



316L FLANGE, FITTING, SMLS PIPE



WELDOLET ASTM A694 F70



**ASTM A860 WPHY 65 BUTT WELD FITTING
REDUCING TEE 32" x 26" SCH.0.75" x 0.688"**



**ASTM A234 WPB
90DEG. ELBOW 30" x STD**



SS SMLS PIPE A312



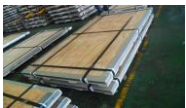
**SS SMLS TUBE A269, A213
& WOODEN CASE PACKAGE**



**SS WELDED PIPE A312 24"
& STEEL CRATE PACKAGE**



**LSAW PIPE API 5L X70
OD42" x 11.13MM x 6M
AIR FREIGHT PACKAGE**



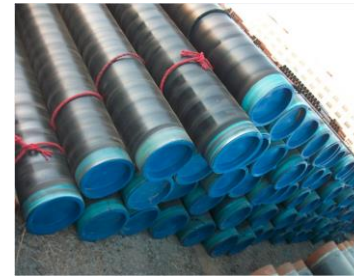
**SS SHEET AISI 304
& PACKAGE**



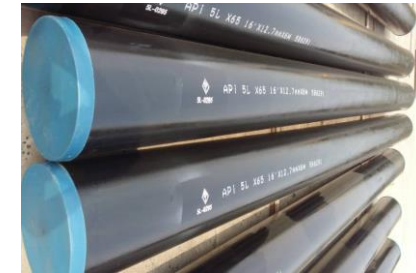
316SS VALVE



BUTTERFLY VALVE



3LPE PIPE



API 5L X65 PIPE



GATE VALVE LEAK TEST



316SS TUBE FITTING



HITACHI MALLEABLE FITTINGS



STUD BOLT & HEAVY NUTS

**FLUOROCARBON COATED
(A193 B7 + A194 2H)**

**STAINLESS TEEL
(A193 B8M CL.2 + A194 GR.8M)**

**ALLOY STEEL
(A193 B7 + A194 2H)**

UCM BALL VALVE & GATE, GLOBE, CHECK, BUTTERFLY VALVES ETC & PHOTO

CLIENT	PRODUCT	MATERIAL	STANDARD	PRESSURE RATING	SIZE	QUANTITY/ YEAR	UNIT	
	UCM BALL VALVE	A216 WCB A105 A351 CF8/CF8M A182 F304/F316	API 6D	150# TO 2500#	1/2" TO 36"	20,000	PCS	
	PNEUMATIC ACTUATOR (UCM)							
	ELECTRIC ACTUATOR (UNICIMA)	ROTARY & LINEAR TYPE		TORQUE 1 - 200kgf·m				JAPAN ORIGIN
	SS BALL VALVE NPT END	A351 CF8 / CF8M		1000PSI, 2000PSI	1/4" TO 4"	200,000	PCS	
	SS BALL VALVE FLANGED END	A351 CF8 / CF8M		150#, 300#, 600#	1/2" TO 24"	3,000	PCS	
	SS GATE, GLBOE, CHECK VALVE	A351 CF8 / CF8M	API 600	150#, 300#, 600#	2" TO 24"	800	PCS	
	SS GATE, GLBOE, CHECK VALVE	A351 CF8M		CLASS 200	1/4" TO 4"	1,000	PCS	
	SS GATE, GLBOE, CHECK VALVE	A182 F316 (FORGED)	API 602	CLASS 800	1/2" TO 2"	200	PCS	
	CS GATE, GLBOE, CHECK VALVE	A216 WCB	API 6D	150# TO 1500#	2" TO 24"	500	PCS	
	CS GATE, GLBOE, CHECK VALVE	A105 (FORGED)	API 602	CLASS 800	1/2" TO 2"	500	PCS	
	CAST IRON VALVE	A126 CL.B		125#	2" TO 24"	1,500	PCS	
	CAST IRON RESILIENT VALVE	A126 CL.B	UL, FM	125#	2" TO 10"	100	PCS	
	BUTTERFLY VALVE	A126 CL.B		150#, 300#	2" TO 60"	4,500	PCS	
	BUTTERFLY VALVE	A351 CF8M		150#, 300#	2" TO 24"	100	PCS	
	HIGH PERFORMANCE BUTTEFLY DOUBLE & TRIPLE OFFSET	A216 WCB, A182 F316	API609	150#, 300#	2" TO 24"	200	PCS	
	SANITARY BUTTERFLY VALVE	AISI 304, 316L	3A, SMS, DIN	(SANITARY)	1" TO 4"	4,000	PCS	
	SANITARY BALL VALVE	AISI 304, 316L	3A, SMS, DIN	(SANITARY)	1" TO 4"	2,000	PCS	
	CS DUAL PLATE WAFER CHECK	A126, A216 WCB	API 594	125# TO 1500#	2" TO 48"	200	PCS	
	SS DUAL PLATE WAFER CHECK	A351 CF8 / CF8M	API 594	150# TO 300#	2" TO 24"	200	PCS	
	PLUG VALVE	DUPLEX 2205		150#	1" TO 4"	50	PCS	
	KNIFE GATE VALVE	AISI 316		150#	2" TO 24"	100	PCS	
	NEEDLE VALVE	AISI 316		6000PSI, 10000PSI	1/8" TO 1"	100	PCS	
	CS Y-STRAINER	A126 / A216 WCB		150#	1/2" TO 12"	300	PCS	
	SS Y-STARINER	A351 CF8 / CF8M		150#	1/2" TO 12"	1,000	PCS	
	STUD BOLT & NUT	A193 B7 / A194 2H A193 B8 / A194 GR.8			1/2" TO 3-1/2"	500	MT	
					1/2" TO 3-1/2"	100	MT	

We are a manufacturer of Ball Valve for Oil & Gas mainly. Our Brand is **UCM** and plant is in Chengdu in China.

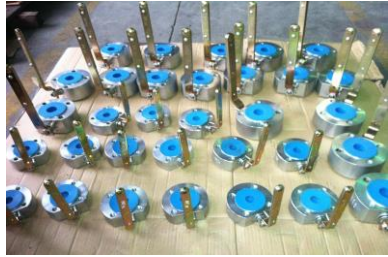
We have 3 japanese engineers who have worked in KTM Japan (=Kitamura Valve Manufacturing Co., Ltd.) which is very famous in the world. One of them has desinged many KTM Ball Valves as manager of KTM engineering's department for almost 30 years and other two engineers have worked at KTM's Quality Control division.

UNICIMA CORPORATION

Kitamura Bldg. 2-6-16 Yaesu Chuo-ku, Tokyo 104-0028, Japan.

Tel: 81-3-3516-1020 Fax: 81-3-3272-1281 t.nakamikawa@unicima.com

UCM BRAND BALL VALVE



CASTED A351 CF8M 1" x ANSI 1500LBS FOR FABRICATOR SHELL IN MALAYSIA

NEW !!! MARINE BALL VALVE WITH LLOYD'S REGISTER

FORGED A105 1" x ANSI 600LBS



FORGED A105 14" x ANSI 600LBS FOR PETRONAS IN MALAYSIA



FOR INDONESIA A216 WCB BODY



FOR PERU A216 WCB BODY



FOR COLOMBIA A216 WCB BODY

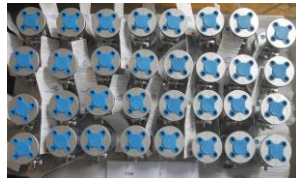


12" x ANSI 900LBS LF2 BODY FOR LNG MALAYSIA





20" x ANSI 150LBS 316SS TRUNNION & SMALL CARBON STEEL BALL VALVE FOR POLYACETAL PLANT IN THAILAND



ELECTRIC BALL VALVE



CARBON SEAT



CRYOGENIC BALL VALVE - 196 DEGREE C. 10" 150LBS BUTT WELD END TRUNNION TYPE



HIGH PRESSURE JACKET BALL VALVE 3/4" 600LBS FLANGED END FLOATING METAL SEAT



HIGH SPEED (1S) BALL VALVE 6" 300LBS FLANGED END FLOATING TYPE METAL SEAT



6" x 2500LBS A105N BODY / PEEK SEAT



3" x 2500LBS 316SS BODY/PEEK SEAT

UCM BRAND BALL VALVE



UNICIMA BRAND ELECTRIC ACTUATOR NUCOM SERIES.